



KONICA MINOLTA

NEW

COLOR READER CR-10 Plus

1

Simple operation shows the color difference between your target and samples in an instant.

Simple basic operation. Just three steps:
Switch on → Measure target → Measure samples

Lightweight and compact!

Large easy-to-read display!

Konica Minolta's
new Color Reader Series
has arrived!



Giving Shape to Ideas

■ Useful functions available with PC application

The PC application stored in the CR-10 Plus body helps you manage data more effectively. (Note: PC is required to use PC application.)

1 Measurement data can be stored in the CR-10 Plus

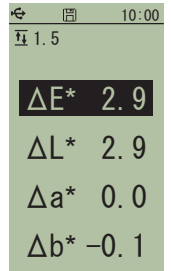
The CR-10 Plus can be set to store measurement data (up to 1,000 measurement data including target data) in its memory. (Once this setting has been made, it is not necessary to use the PC application to set it again.)

2 Pass/fail judgment

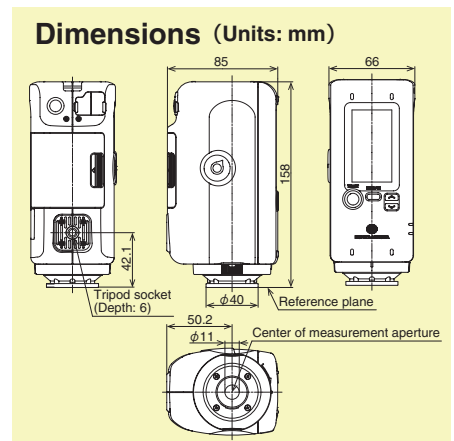
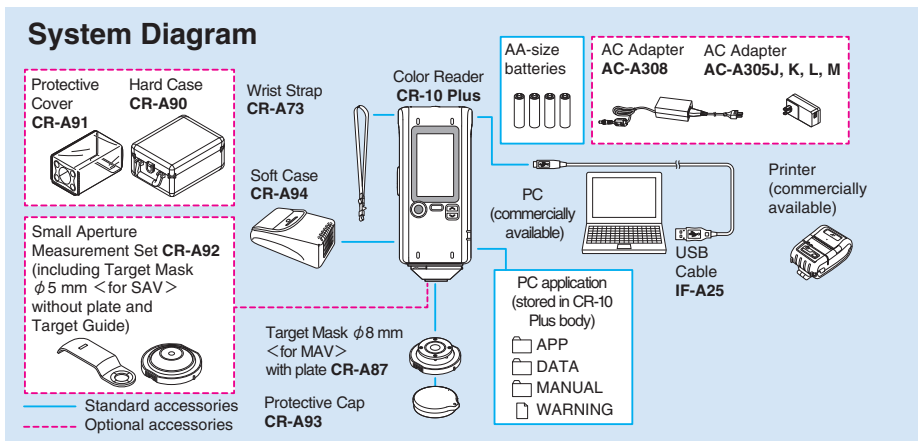
You can set a tolerance on the CR-10 Plus. Then, if the color difference exceeds the tolerance, the CR-10 Plus warns you that the sample exceeds tolerance by highlighting the over-tolerance value in the display and giving a different sound than for measurements that pass, so you can know immediately whether the sample color has passed or failed. (Once this setting has been made, it is not necessary to use the PC application to set it again.)

3 Small Aperture Measurement Set (Optional accessory)

A $\phi 5$ mm target mask is also available. It includes a Target Guide for positioning the instrument for measurements.



Display example



Main Specifications

Model	Color Reader CR-10 Plus
Illumination/viewing system	8°:d _i (8°illumination angle/diffuse viewing: specular component included) (conforms to DIN 5033 Teil 7, JIS Z 8722 condition d, ISO 7724/1, CIE No. 15, ASTM E 1164)
Detector	Silicon photocells (6 pcs.)
Display range	L*: 1 to 100
Light source	Pulsed xenon lamps
Measurement time	Approx. 1 sec.
Battery performance	Approx. 2,000 measurement at 10-sec. intervals when using alkaline-manganese batteries
Measurement area	Approx. $\phi 8$ mm, approx. $\phi 5$ mm (optional accessory) (*Optional $\phi 5$ mm mask does not conform to DIN 5033 Teil 7 and CIE No. 15.)
Repeatability	Standard deviation within ΔE^*ab 0.1 (when a white calibration plate is measured 30 times at 10-second intervals)
Display languages	English, Simplified Chinese, Japanese
Interface	USB2.0
Observer	10° Standard Observer
Illuminant	D65
Display data	Color difference, average (up to 10 times), Pass/fail judgment
Color different formula	$\Delta(L^*a^*b^*)$, $\Delta(L^*C^*H^*)$, ΔE^*ab (CIE 1976)
Data memory	Target data, Samples data (up to 1,000 in total)
Pass/fail item	ΔE^*ab , $\Delta(L^*a^*b^*)$, $\Delta(L^*C^*H^*)$
Operation temperature/ humidity range	0 to 40°C, relative humidity 85% or less (at 35°C) with no condensation
Storage temperature/ humidity range	-20 to 40°C, relative humidity 85% or less (at 35°C) with no condensation
Power	4 AA-size alkaline dry batteries or nickel-metal-hydrate rechargeable batteries, USB bus power or special AC Adapter
Size (W x H x D)	66 x 158 x 85 mm
Weight	420 g (without batteries)

PC system requirement

OS Windows® 7 Professional 32bit, 64bit
Windows® 8 Pro 32bit, 64bit
Windows® 8.1 Pro 32bit, 64bit
(English, Simplified Chinese, or Japanese)

- The hardware of the computer system to be used must meet or exceed the recommended system requirements for compatible OS being used.
- One USB2.0 port is necessary.

- The specifications and appearance shown herein are subject to change without notice.
- KONICA MINOLTA, the Konica Minolta logo and symbol mark, and "Giving Shape to Ideas" are registered trademarks or trademarks of KONICA MINOLTA, INC.
- Other company names and product names used herein are trademarks or registered trademarks of their respective companies.



SAFETY PRECAUTIONS

For correct use and for your safety, be sure to read the instruction manual before using the instrument.

- Always connect the instrument to the specified power supply voltage. Improper connection may cause a fire or electric shock.
- Be sure to use the specified batteries. Using improper batteries may cause a fire or electric shock.



Certificate No.: LRQ 096094/A
Registration Date: March 3, 1995



Certificate No.: JQA-E-80027
Registration Date: March 12, 1997

KONICA MINOLTA, INC.
Konica Minolta Sensing Americas, Inc.
Konica Minolta Sensing Europe B.V.

Osaka, Japan
New Jersey, U.S.A.
European Headquarter /BENELUX
German Office
French Office
UK Office
Italian Office
Swiss Office
Nordic Office
Polish Office
SE Sales Division
Beijing Office
Guangzhou Office
Chongqing Office
Qingdao Office
Wuhan Office

Konica Minolta (CHINA) Investment Ltd.

Konica Minolta Sensing Singapore Pte Ltd.
Konica Minolta, Inc.
Konica Minolta, Inc.

Optics Company, Korea
Optics Company, Sensing Business
Thailand Representative Office

Phone : 888-473-2656 (in USA), 201-236-4300 (outside USA)
Nieuwegein, Netherlands **Phone** : +31 (0)30 248-1193
München, Germany **Phone** : +49 (0)89 4357 156 0
Roissy CDG, France **Phone** : +33 (0)1 80 11 10 70
Warrington, United Kingdom **Phone** : +44 (0)1925 467300
Cinisello Balsamo, Italy **Phone** : +39 02849488.00
Dietikon, Switzerland **Phone** : +41 (0)43 322-9800
Västra Frölunda, Sweden **Phone** : +46 (0)31 7099464
Wroclaw, Poland **Phone** : +48 (0)71 33050-01
Shanghai, China **Phone** : +86-(0)21-5489 0202
Beijing, China **Phone** : +86-(0)10-8522 1551
Guangdong, China **Phone** : +86-(0)20-3826 4220
Chongqing, China **Phone** : +86-(0)23-6773 4988
Shandong, China **Phone** : +86-(0)532-8079 1871
Hubei, China **Phone** : +86-(0)27-8544 9942
Singapore **Phone** : +65 6563-5533
Seoul, Korea **Phone** : +82 (0)2-523-9726
Bangkok, Thailand **Phone** : +66-2361-3730

Fax : 201-785-2482
Fax : +31 (0)30 248-1280
Fax : +49 (0)89 4357 156 99
Fax : +33 (0)1 80 11 10 82
Fax : +44 (0)1925 711143
Fax : +39 02849488.30
Fax : +41 (0)43 322-9809
Fax : +48 (0)71 734 52 10
Fax : +86-(0)21-5489 0005
Fax : +86-(0)10-8522 1241
Fax : +86-(0)20-3826 4223
Fax : +86-(0)23-6773 4799
Fax : +86-(0)532-8079 1873
Fax : +86-(0)27-8544 9991
Fax : +86-(0)6560-9721
Fax : +82 (0)2-523-9729
Fax : +66-2361-3771

Addresses and telephone/fax numbers are subject to change without notice. For the latest contact information, please refer to the KONICA MINOLTA Worldwide Offices web page :

<http://konicaminolta.com/instruments/network>