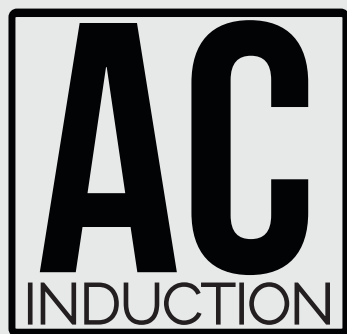


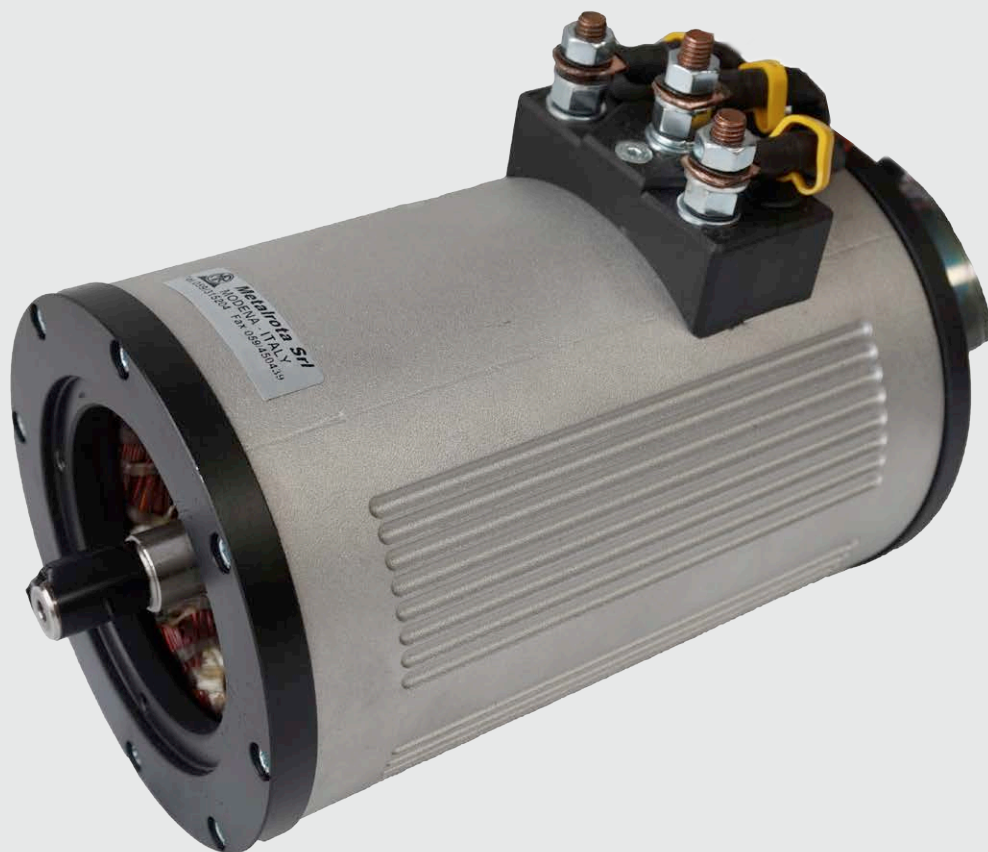


**dal 1965**

# metalrota



# ASYNCHRONOUS MOTORS



Tel: +(39) 059315204 - Fax: +(39) 059450439  
[www.metalrota.it](http://www.metalrota.it) - [info@metalrota.it](mailto:info@metalrota.it)



## The Company

**Metalrota srl** operates both nationally and internationally, formed in 1965, it was the first Italian Company manufacturing drivewheels complete of electric motors; now offers a complete range of DC, AC and Synchronous AC PMS motors, differential units, steering and lifting systems by coupling its own motors with gearboxes and hydraulic pumps.

The strength of **Metalrota** is production system, the wide variety of motors technologies, with different windings, correctly matching the application.

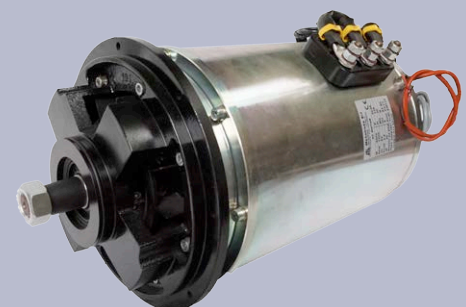
On request, it is possible to get many solutions and customized variants for the realization of the product, plus all the accessories and optional which may be assembled on. All this to satisfy an increasingly demanding market, to meet which **Metalrota** is keen to interact with customers for an optimal result.

## AC Motors

Our **AC motors** for battery operated vehicles, from 24V up to 96V, are mostly designed for works intensively and needs great flexibility, in order to supply a huge number of high torques during the starting and acceleration processes and get optimum performance at high speed.

We can satisfy your requirements thanks to a wide set of models and engine types and in different application sectors, for example in material handling, cleaning, agricultural, airport (GSE), automotive (AGV), scissor lifts, home-building and entertainment (e.g. carousels).

Thanks to our multiannual experience, we are able to **offer personalized solutions** to guarantee long-term products. **Metalrota** can offer a large range motors from 300W to 15kW with Protection in IP20, IP54 and IP66AC



# APPLICATIONS

## DRIVE WHEELS:

We assemble AC motors in our drive wheels in various application fields, mainly the ones that require high standards of torque and speed, all this combined with a very low battery consumption. The application in which they are mostly used are AGVs, lift trucks and platforms.

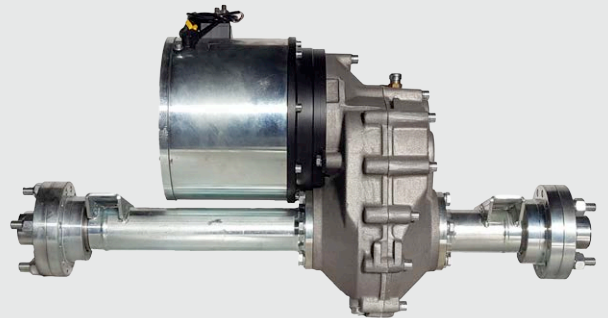


## GEAR MOTORS:

AC motors joined with reducers are able to provide a great peak torque and commonly used for steering systems. They apply on industrial automations and agricultural machinery.

## DIFFERENTIALS:

Various size of motors are used in utility vehicles sectors, 3 and 4 wheelers, because they are also run with high torque and can strengthen high powers. Applications: electric quadricycle, agricultural machinery, AGVs, floor cleaning equipment.

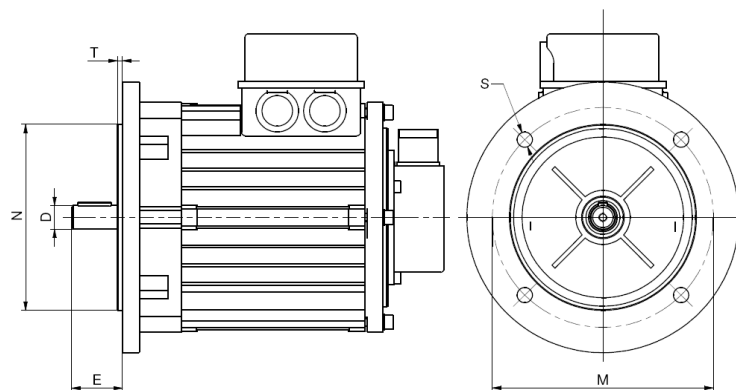


## MOTORPUMPS:

In the motor pump field this product is used because it has the ability to provide high power and torque for long time without problems of thermal overheating. Application: lifting system, servo drives.

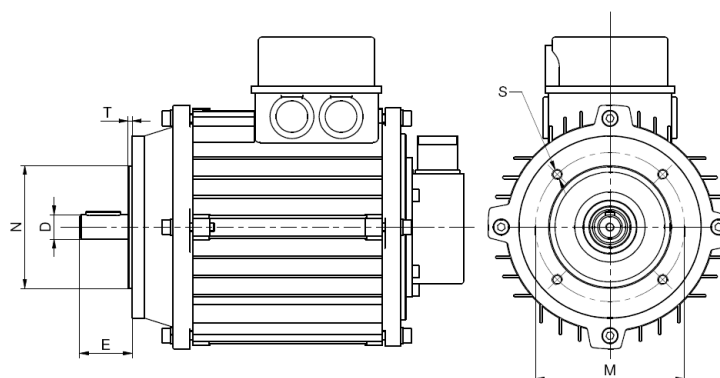
# AC FLANGES

## B5



MOTORE / MOTOR		FLANGIA / FLANGE				ALBERO / SHAFT		
TIPO FLANGIA TYPE FLANGE	POTENZA POWER	Ø STATORE Ø STATOR	N	M	T	S	D	E
BN 63	0.3-0.4 kW	90	95	115	3	9	11	23
BN 71	0.5-0.8 kW	106.5-110	110	130	3.5	9	14	30
BN 80	1-1.5 kW	110-125	130	165	3.5	11	19	40
BN 90	1.5-2 kW	135	130	165	3.5	11	24	50
BN 100	2.5-5 kW	152-173	180	215	4	14	28	60
BN 132	5-10 kW	200	230	265	4	14	38	80

## B14



MOTORE / MOTOR		FLANGIA / FLANGE				ALBERO / SHAFT		
TIPO FLANGIA TYPE FLANGE	POTENZA POWER	Ø STATORE Ø STATOR	N	M	T	S	D	E
BN 63	0.3-0.4 kW	90	60	75	2.5	M5	11	23
BN 71	0.5-0.8 kW	106.5-110	70	85	2.5	M6	14	30
BN 80	1-1.5 kW	110-125	80	100	3	M6	19	40
BN 90	1.5-2 kW	135	95	115	3	M8	24	50
BN 100	2.5-5 kW	152-173	110	130	3.5	M8	28	60
BN 132	5-10 kW	200	130	165	4.0	M10	38	80

## SENSORS:

*The function of sensor is to provide the correct angular position of the rotor.*

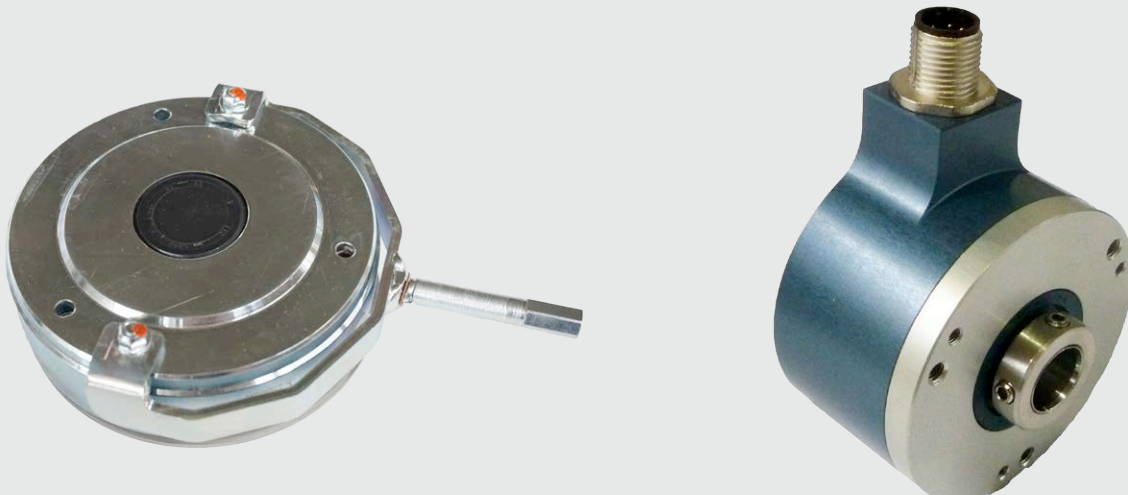
**The configurations available are:**

- **Phonic wheel:** The sensor has good properties both at high and low speeds
- **Sensor Bearing:** are used to accurately monitor the status of rotating with very compact shape
- **Thermal sensor :** motors are usually assembled with a KTY84-130



## OPTIONAL:

- **Electromagnetic brake:** from 5 Nm up to 100Nm, from IP20 up to IP65
- **Encoders:** incremental encoder and absolute encoder with various types of resolution and protection from atmospheric agents.







# **AC** ASYNCHRONOUS INDUCTION **MOTORS**



**dal 1965**

*Metalrota S.r.l.*

*Via Bulgaria, 46 - 41122 Modena (Italy) - VAT: IT00158220368*

*Tel: +(39) 059315204 - Fax: +(39) 059450439*

*www.metalrota.it - info@metalrota.it*

