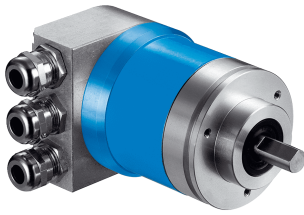


## ATM60 CANopen

Reliable, established and modular

**ABSOLUTE ENCODERS**

**SICK**  
Sensor Intelligence.



### Technical data overview

<b>Encoder version</b>	Multiturn
<b>Shaft type</b>	Solid shaft, face mount flange Solid shaft, Servo flange Blind hollow shaft
<b>Shaft diameter</b>	Solid shaft, face mount flange 10 mm Solid shaft, Servo flange 6 mm Blind hollow shaft 15 mm
<b>Connection type</b>	Connection adapter for CANopen
<b>Communication interface</b>	CANopen
<b>Number of steps per revolution (max. resolution)</b>	
<b>Max. resolution (number of steps per revolution x number of revolutions)</b>	13 bit x 13 bit (8,192 x 8,192)
<b>Programmable/configurable</b>	Over PLC-Engineering-Tool

### Product description

The ATM60 CANopen absolute multiturn encoder from SICK provides reliable positional and speed information even in harsh ambient conditions, with a resolution of up to 26 bits. This product family, which is proven in the field, is based on the magnetic measurement principle. The 13-bit singleturn range is scanned by a sensor using permanent magnetic elements. The 13-bit multiturn range consists of a magnetic reduction gear. Equipped with a zero-set pushbutton, the encoder can be easily set to zero or to any other user-programmed value on site. The connection adapter, which can be removed from the device, makes user maintenance and mounting easy. With its magnetic scanning, rugged IP67 enclosure rating and high level of resistance to shock and vibration, the ATM60 is ideal for use in harsh conditions.

### At a glance

- Extremely rugged, tried-and-tested absolute multiturn encoder with a resolution of up to 26 bits
- Mechanical interface: face mount, servo flange, blind hollow shaft, adapter accessories
- Zero-set and preset functions via hardware/software
- No battery
- Electrical interface: CAN specification 2.0B, electrically isolated; DS 301, V4.01, DSP 406, V2.0, Class 2
- Electronically adjustable, configurable resolution
- Network status info via duo LED
- Magnetic scanning

### Your benefits

- Fewer variants are required since one freely programmable encoder supports all singleturn and multiturn resolutions
- Versatility thanks to a variety of electrical connection adapters (1 to 3x PG, 2x M12)
- Maintenance-free encoder, long service life
- A base device with flexible application possibilities thanks to easily interchangeable collets for the blind hollow shaft
- Quick commissioning using the zero-set/preset function either at the press of the button on the device or via software
- Safer applications thanks to highly reliable shock and vibration resistance
- Worldwide availability and service

### Fields of application

- Measurement of absolute position in various machines and systems such as wind power and solar plants, material transport equipment, textile machines, packaging systems, rollers, harbor facilities, printing machines

## Ordering information

Other models and accessories → [www.sick.com/ATM60\\_CANopen](http://www.sick.com/ATM60_CANopen)

- **Mechanical design:** Solid shaft, face mount flange

Encoder version	Shaft diameter	Connection type	Type	Part no.
Multiturn	10 mm	Connection adapter for CANopen <sup>1)</sup>	ATM60-C4H13x13	1030024

<sup>1)</sup> Please order the bus adaptor separately.

- **Mechanical design:** Solid shaft, Servo flange

Encoder version	Shaft diameter	Connection type	Type	Part no.
Multiturn	6 mm	Connection adapter for CANopen <sup>1)</sup>	ATM60-C1H13x13	1030025

<sup>1)</sup> Please order the bus adaptor separately.

- **Mechanical design:** blind hollow shaft

Encoder version	Shaft diameter	Connection type	Type	Part no.
Multiturn	15 mm	Connection adapter for CANopen <sup>1)</sup>	ATM60-CAH13x13	1030026

<sup>1)</sup> Please order the bus adaptor separately.

## SICK AT A GLANCE

SICK is one of the leading manufacturers of intelligent sensors and sensor solutions for industrial applications. A unique range of products and services creates the perfect basis for controlling processes securely and efficiently, protecting individuals from accidents and preventing damage to the environment.

We have extensive experience in a wide range of industries and understand their processes and requirements. With intelligent sensors, we can deliver exactly what our customers need. In application centers in Europe, Asia and North America, system solutions are tested and optimized in accordance with customer specifications. All this makes us a reliable supplier and development partner.

Comprehensive services complete our offering: SICK LifeTime Services provide support throughout the machine life cycle and ensure safety and productivity.

For us, that is “Sensor Intelligence.”

## WORLDWIDE PRESENCE:

Contacts and other locations –[www.sick.com](http://www.sick.com)